

# STEERING COLUMNS TYPE KK...



The M+S Hydraulic KK Steering Columns transfer the torque from the steering wheel of the vehicle to the HKU, HKUS or other steering units of the same class. The KK steering columns consist of a pipe in which the control shaft is centred.

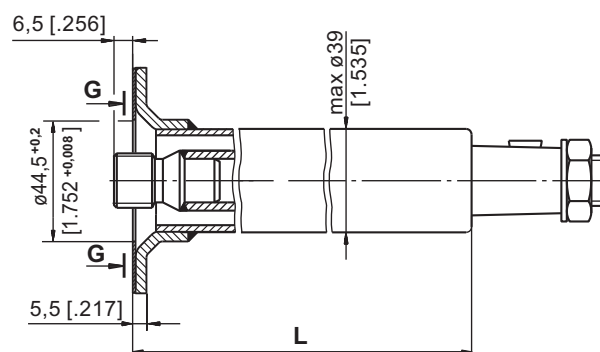
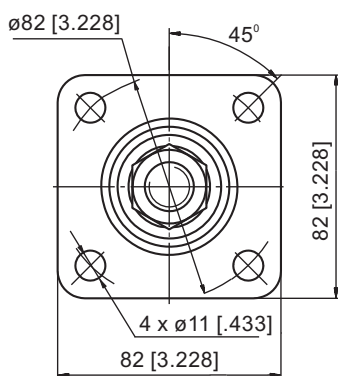
Permissible loads of the steering column are as follows:

Max. torque applied to the steering wheel      24 daNm [2124 lb-in]  
 Max. bending moment      20 daNm [1770 lb-in]  
 Max. axial load      100 daN [225 lbs]

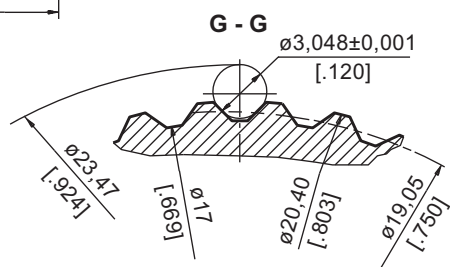
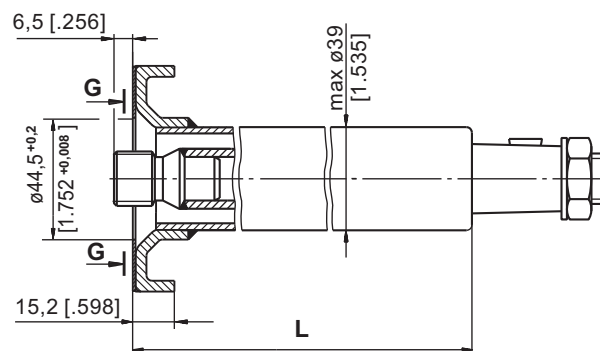
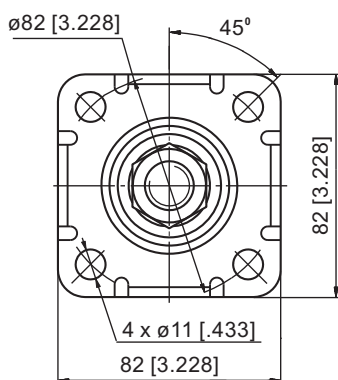
The steering column must be additionally supported when the length L exceeds 150 mm [5.91 in].

## DIMENSIONS AND MOUNTING DATA

### Type KK



### Type KKF



## SPECIFICATION DATA

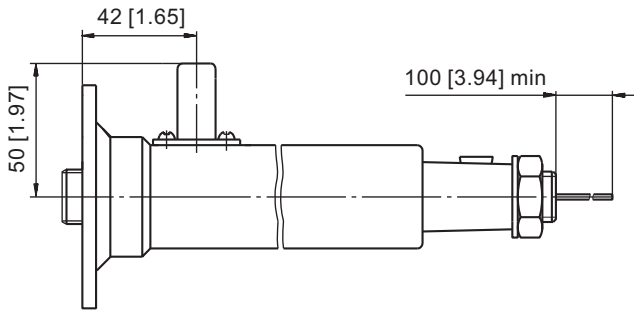
Involute Spline Data		
Modul	m	1.5875
Number of Teeth	z	12
Pressure Angle	$\alpha$	30°
Diametral Pitch	DP	16/32

Parameters	Type	Type				
		KK 75	KK 150	KK 390	KK 441	KK 750
L	mm	78	168,2	393	441	777,8
	[in]	[3.07]	[6.62]	[15.47]	[17.36]	[30.62]
Weight	kg	0,75	1,1	1,9	5,05	3,3
	[lb]	[1.65]	[2.43]	[4.19]	[11.13]	[7.28]

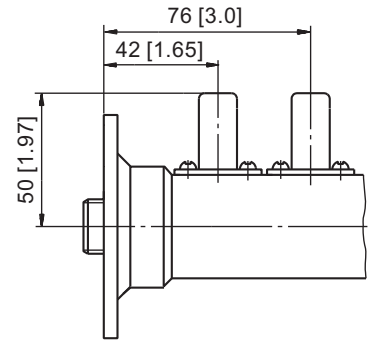
**Note:** The length L depends on the transport vehicle construction. For more information regarding other lengths and shaft versions, please refer to M+S Hydraulic.

**SOUND SIGNAL CONNECTION**

**E Option**



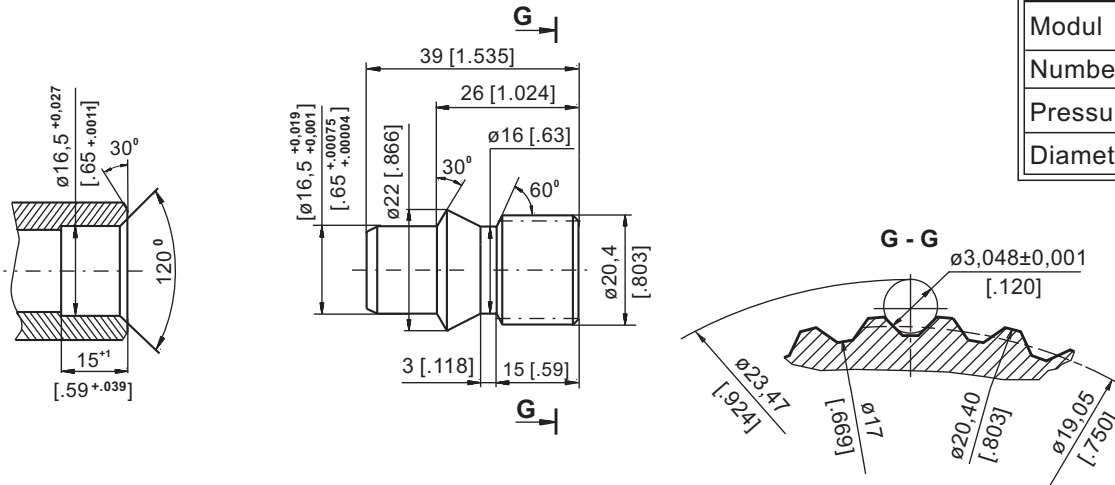
**EE Option**



**Shaft End Part**

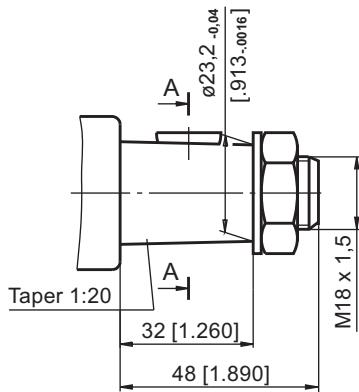
Order No: 46415 001 00

Involute Spline Data		
Modul	m	1.5875
Number of Teeth	z	12
Pressure Angle	$\alpha$	30°
Diametral Pitch	DP	16/32

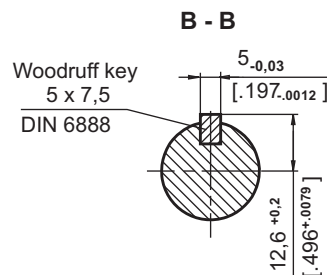
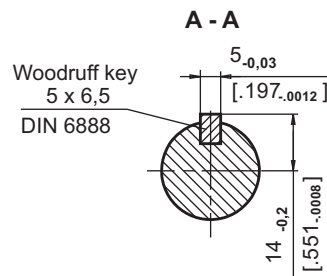
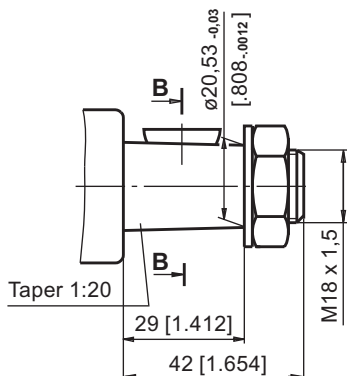


**SHAFT VERSIONS**

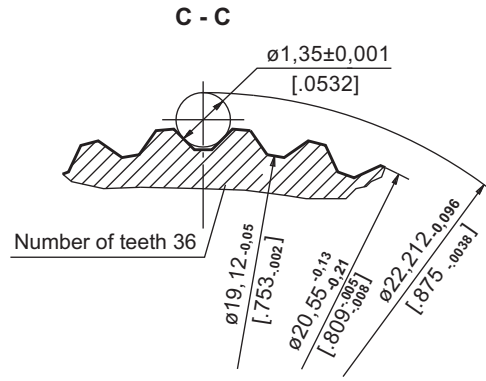
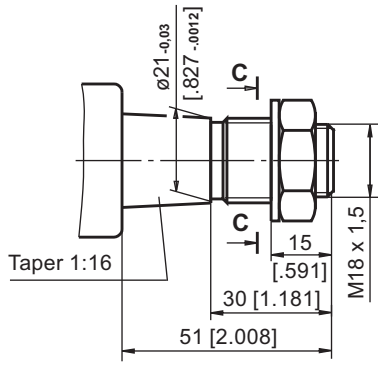
**TYPE I**



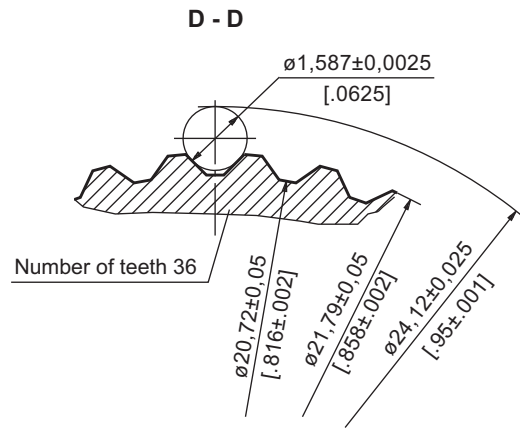
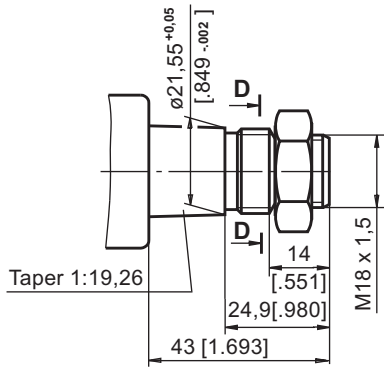
**TYPE II**



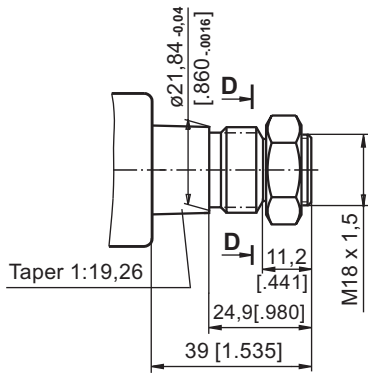
**TYPE III**



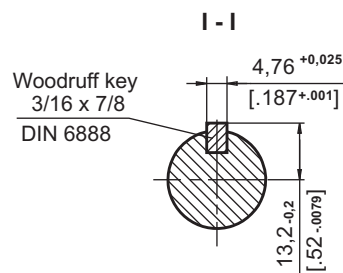
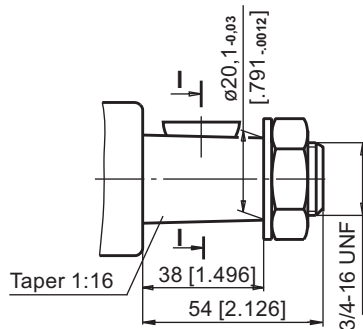
**TYPE IV**



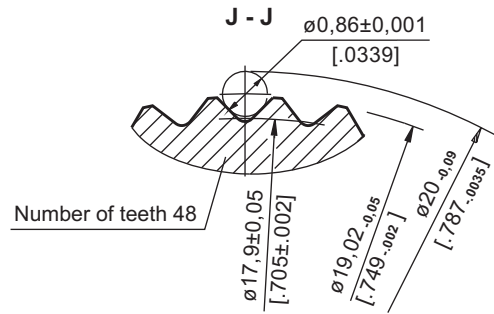
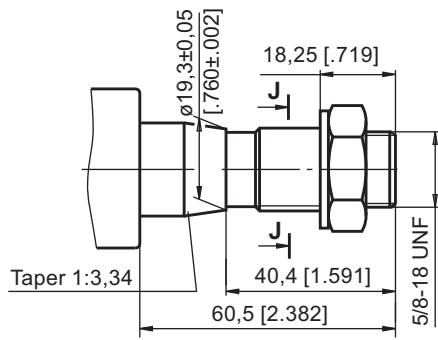
**TYPE V**



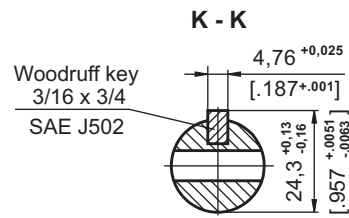
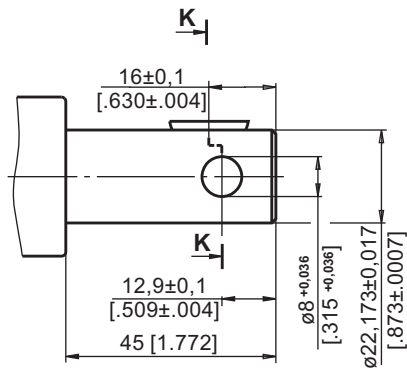
**TYPE VI**



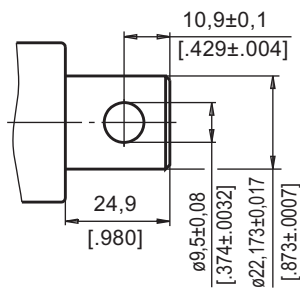
**TYPE VII**



**TYPE VIII**



**TYPE IX**



**TYPE XIII**

